

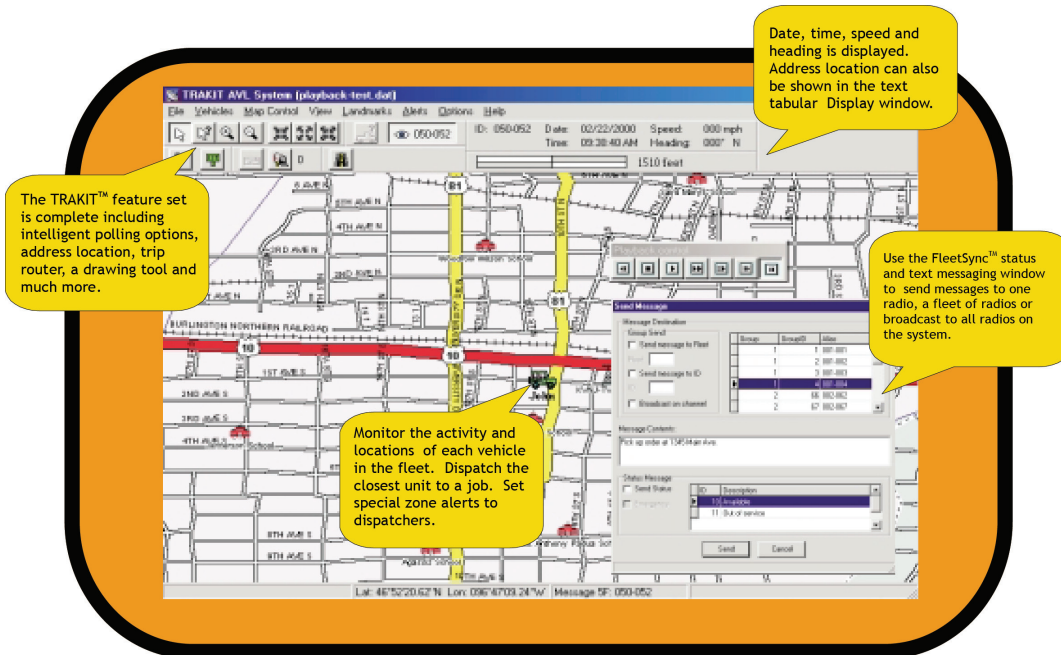
FleetSync™ TRAKIT™

Automatic Vehicle Location for fleet management with Kenwood FleetSync™ messaging

The TRAKIT™ GPS AVL fleet management system is an integrated family of hardware and software products for tracking of fleet activity on the Kenwood FleetSync™ radio system. FleetSync™ messages can be sent and received from within the AVL module. The dispatcher can efficiently monitor the status and locations of remote units and direct the activity of the vehicles in the fleet to achieve optimal efficiency.

Maximize efficiency with FleetSync™ TRAKIT™.

- Monitor the activity of an entire fleet of vehicles, real-time
- Track selected vehicles in multiple windows
- Set emergency zone and event alerts to dispatchers
- Detailed digital map includes all of the United States and Puerto Rico
- Place custom landmark symbols and annotation on maps
- The powerful Point & Click data feature associates a custom database with landmarks
- Record data in computer files for future analysis
- Download location data from vehicle data buffers over-the-air



TRAKIT™

GPS AVL Devices for FleetSync™ Radio Systems



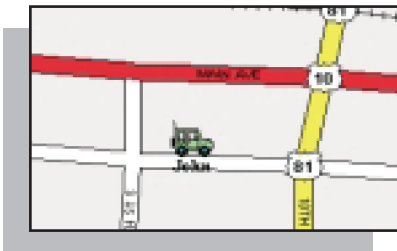
For basic satellite tracking and FleetSync™ messaging, the TRAKIT™-20 offers the most economical solution. Features include intelligent position reporting, over-the-air programming, connectivity to on-board notebook computers or terminals and a data buffer with over-the-air download capability.

The TRAKIT™-25A includes all of the features of the TRAKIT™-20 as well as expanded capability for additional input and output devices. Devices for data collection can be interfaced to accommodate a wide variety of applications.



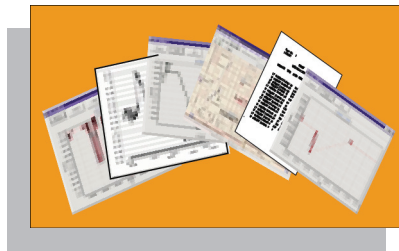
TRAKIT™

GPS AVL Software



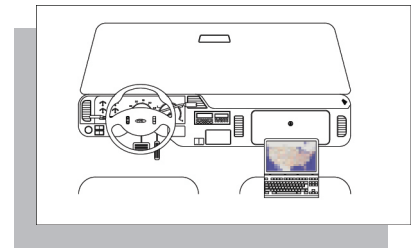
FleetSync™ TRAKIT™

Monitor the locations of all your fleet vehicles, realtime. Direct their activity using FleetSync™ messaging. Dispatch closest vehicle to the job. Set zone alerts for efficiency and safety. Includes exclusive Point&Click landmark data feature.



TRAKIT™ - ANALYZER

Analyze every aspect of fleet operations. Data captured by real-time monitoring or downloaded from vehicle TRAKIT™ units is processed to create a battery of management reports. Included are Daily Activity Reports, Route-Leg Reports and Location Reports.



TRAKIT™ - SUPERVISOR MONITOR

See where you are as well as where the other fleet vehicles are. This software installed in an on-board notebook computer shows the location of all of the fleet vehicles on a digital map, just like what the dispatcher sees. Includes FleetSync™ messaging.

Other specialized modules include Preventive Maintenance Reporting, Route Account Analysis and Schedule Adherence.

FleetSync™ is a registered trademark of Kenwood Communications Corporation

TRAKIT™ is a registered trademark of IDA Corporation