

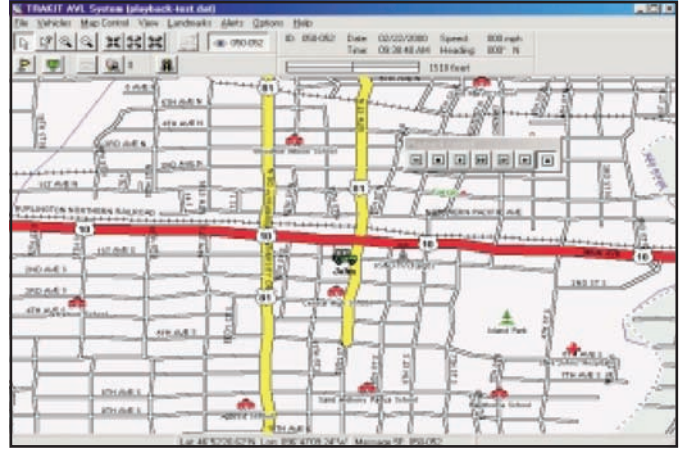
TRAKIT-USA

Monitor and direct the activity of an entire fleet of vehicles with TRAKIT-USA software. Installed in the base computer dispatchers can have complete and up-to-the-second information on the location and status of any vehicles in the fleet. Closest vehicles can be sent to a job or progress along a route can be easily determined.

Included is map data for the entire continental United States and Puerto Rico. The digital map can be easily customized with user landmarks and detailed annotation. Use the address search utility to find any address.

TRAKIT intelligence provides maximum efficiency of the communications link by providing for only necessary transmissions to take place. Zone and event alerts advise the dispatcher of predetermined conditions that may require attention. If the vehicles are appropriately equipped messages can be exchanged between the base and vehicles.

TRAKIT-USA can simultaneously track vehicles which are communicated with via radio, EDACS, OpenSky and P25. Capture location data in computer files for play back at a later time or for processing by the TRAKIT-ANALYZER module.



Features & Capabilities

- Real-time monitor activity of an entire fleet of vehicles.
- Simultaneously track vehicles using radio, EDACS, OpenSky and P25 communications.
- Intelligent polling options
- Change vehicle position reporting and buffer parameters over-the-air
- User-customize zone and event alerts
- Complete United States map including Puerto Rico
- Extensive pan and zoom utility with automatic follow of specified vehicles
- Place custom landmark symbols and annotation on maps
- Point & Click feature associates custom database with landmarks
- Drawing tool
- Address search utility
- Record location data in computer files for future analysis or documentation.
- Play back activity on-screen on the digital map
- Download data captured in the vehicle buffer over-the-air
- Available in single site, 5-seat and 10-seat network versions





Digital Map

- Complete USA map including Puerto Rico
- Numerous pan and zoom functions
- Place landmarks on map for visual reference
- Maintain multiple landmark layers simultaneously
- Place annotation labels on map
- Point & Click Data Feature for on-screen landmark database maintenance
- One primary and two secondary simultaneous map views
- Vehicle Info List tabular display showing text addresses of each vehicle
- Elliptical and rectangular zone alerts
- Multiple alert types
- Grid Lines, Grid Tics
- On-screen drawing tool
- Address search
- Router
- Print map function

Vehicle Programming

- Alias identification
- 16 Vehicle icon selection
- Individual polling interval setting
- Bread-crumbs trail setting
- Over-the-air vehicle configuration setting
- Over-the-air vehicle buffer download

Real-Time Operation

- Monitor activity of all vehicles in the fleet
- Query current location of any vehicle