

Model 24-66 IP Mini Console

Best-in-Class VoIP Console Technology

Extending the technology of our proven 24-66 VoIP platform, this Mini Console offers control solution for up to 6 separate base station radios using IP technology.

Model 24-66 Mini Console was engineered to “cut-the-cord” of expensive leased lines and cumbersome cabling by leveraging VoIP, LAN and WAN technologies. It offers industry’s most cost conscious multi-site and multi-station connectivity and control functionality.



Designed with an industry exclusive **any button** – **any function** programmability, the VOIP Mini Console features unparalleled flexibility.

Features & Capabilities

STANDARD FEATURES

- Select up to 6 Sites
- Select up to 250 Channels or Talk Groups
- Selected and Unselected Audio
- Available with Handset or Desk Mic
- Alpha-Numeric Display
- 110 or 15 Volt Operation

- US or European Power Supply
- Mute
- Alarm Tone
- Intercom
- Clock
- VU Meter

OPTIONAL FEATURES

- One Touch Transmit
- Wall Mount
- Headset and Footswitch

Basic VoIP Mini Console System

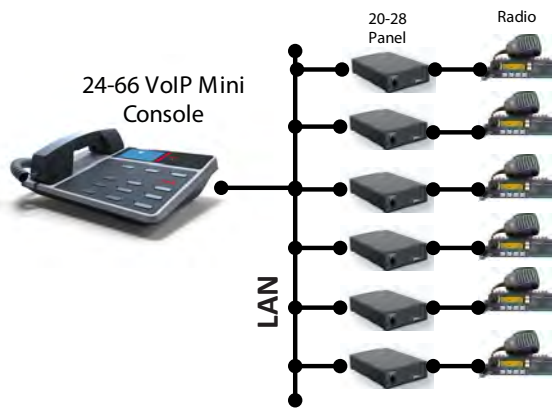


Figure 1: Basic Mini Console VoIP Radio Control System

Extended VoIP Mini Console System

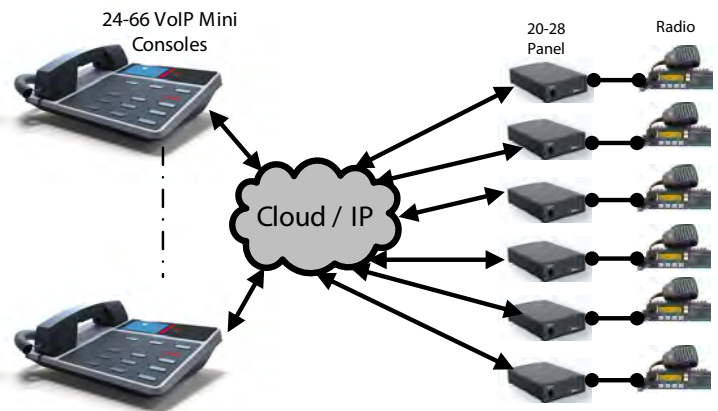


Figure 2: Extended Mini Console VoIP Radio Control System

The Model 24-66 VoIP Mini Console Remote Controller is intended for use with IDA's Model 20-28 VoIP Termination Panel and will support both trunking and conventional systems



Model 20-28 VoIP Termination Panel

Designed for use with the Model 24-66 VoIP desktop controller, the Model 20-28 VoIP interfaces to remotely located base stations or repeaters. Based upon proper control signals received from the desktop controller the Model 20-28 VoIP directly controls the radio by either binary or serial control.

Local Option

For installations where local operation of the base station is desired, the 20-28 VoIP is available with desk microphone, speaker jack and volume control. (Option RTM-604)

Model 24-66 VOIP Mini Console SPECIFICATIONS

Input voltage	15 Vdc @ 1000 mA 24 Watt Wall Transformer 2.1 x 5.5 mm barrel conn. Center (+)
Current consumption @ 15 Vdc	450 mA (TX) 800 mA (RX) 400 mA (Standby)
Standby voltage	15 Vdc
Temperature range	0 to +60 degrees C
Relative humidity	90% at 50 degrees C
TX hum and noise	-60 dB (ref. +0 dBm)
Threshold of compression (speaker audio)	-20 dBm adjustable
Speaker audio output	3 W into 4 ohms
Distortion at rated speaker output	< 3%
RX hum and noise	-47 dB (ref. 0dBm)
Frequency response	+1, -3 dB (300 to 3000 Hz)
TX compression	With an audio increase of 30 dB beyond the start of compression the output increases less than 17.5 db
Ethernet Interface	The Ethernet interface consists of a three port switch. One port connects externally to the LAN and the second port connects externally to a computer to allow the computer access to the LAN. The third port connects internally to the Ethernet port of the NET+ARM MCU.
DSP firmware	The DSP firmware provides the following standard CODEC algorithms: G.711, G.723.1, G.726.
Weight	4 lbs 15 oz
Dimensions	4.75" (H) x 10" (W) x 8" (D)