

## TrakIt Nationwide IDA Client Software Platform

TrakIt Nationwide Client is an industry leading asset tracking software technology. It is a browser based mapping engine which captures, tracks and reports accurate locational intelligence of your assets (fixed and mobile).

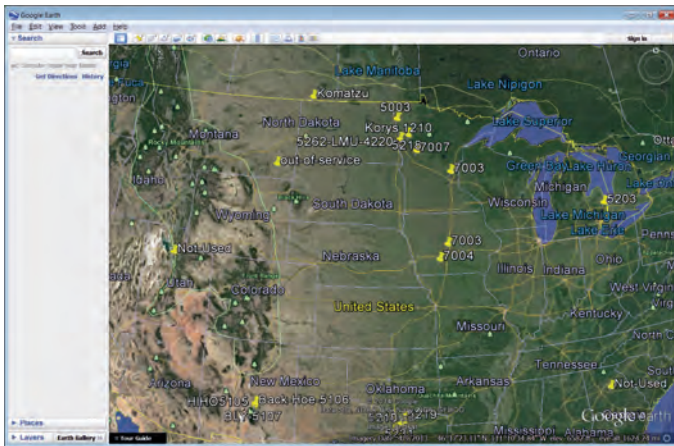
The Client software has been designed to generate management reports for asset location, fleet route activity and analysis, location and duration of fleet stops. The technology has been designed to individually program each of the operating parameters of identified fleet.

TrakIt Nationwide Client software allows easy customization of the visual representation of the monitored asset based on grouping, type of activity, location areas, and proximity to the landmarks. It offers detailed start-stop analysis of identified asset / mobile fleet.

Picture the entire fleet on the map, and displays the address of any vehicle by a "cursor touch". Sends a text message alert to your PC or cell phone if any vehicle has breached your electronic fence.

Supported by best-in-class customer support team and a well documented Users Manual ensures a great customer experience for the use of our technology.

TrakIt software technology's cost-conscious, customization-friendly design and ease-of-use has earned our customer's trust for decades.



### Features

- High-performance, high utility fleet management software.
- Internet Driven
- View the last reported position of your entire fleet across the USA.
- Place Points-of-Interest on the map: Customer, Vendors, and Landmarks.
- Maintain info for each Point-of-Interest via interactive Point and Click Database.
- Change settings "overair."
- Query to know location "right now."
- Monitor vehicle activity in or out of area electronically fenced.
- Send alerts to PC or cell phone.
- Store & Forward out of coverage activity.
- Log stops by ignition switch or with engine running when GPS indicates lack of movement.
- Power down to sleep mode when ignition is off. (less amp draw)
- Get status of any vehicle and address location with just a click.
- Search map locations by address.
- Zoom and pan for map views.
- Zoom to street level.
- Relay activation to disable starter.

# Trakt Nationwide

## Generated Reports Overview

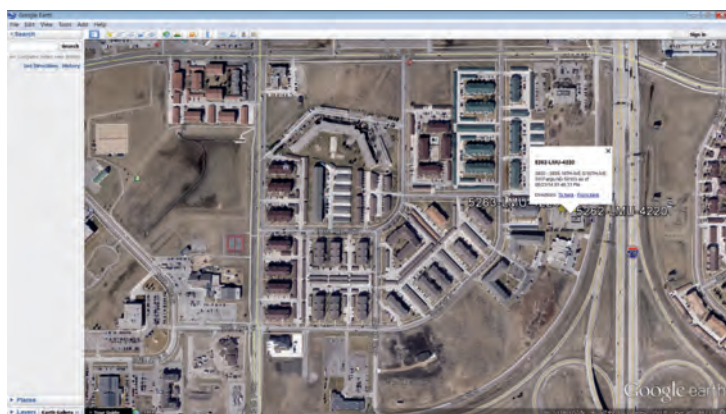
Automatically get a complete record and analysis of routes taken and stops made by your rolling assets.

IDA Client automatically captures information on vehicles activity to recognize the location, date, and time of GPS registrations (including starts and stops and the duration of the stops).

The stops are geo-referenced in the system to associate the event of the vehicle stop with a database that can contain various elements of information including account number, name, address, phone, etc.

The vehicle activity captured is processed to generate fleet management reports described herein.

The system was designed for simple operation and allows for automatic geo-referencing of stops. However a reconciliation step is included in the processing to allow the operator to make intelligent decisions on identifying and matching the correct data in the system with the vehicle stop. This process step assures the accuracy and completeness of fleet management reports.



### Salient Features

- **Vehicle Activity Report**  
History of locations presented on a digital map and can include a list of addresses for each location. The route locations can be connected and time/date stamped. If vehicle is outside a customer designated GEO fence, then the motion positions log in a different color on the map.
- **Location Report**  
A list of addresses of all vehicles in a fleet, and a digital map can be included to visually show their locations. These locations are the last position update that has registered. The report will indicate if vehicles are located outside the GEO Fence. If a current location is needed for a unit, the customer can poll the system to find it and provide the position information on a “right now” basis.
- **Status Report**  
Provides update interval “mode”, software level, and vehicle names for fleet.
- **Extended Status**  
Provides each vehicles operating parameters, and options/settings that are enabled.
- **Unit Stops Report**  
Record of what stops are made by the unit. The location, time, and duration of stops. Stop addresses can be interfaced to a database to associate those addresses with locations of customers or job sites. The system would then recognize the stop by customer name on-screen and for printed reports.
- **Customer Activity Report**  
A list of all units that have stopped at a data base referenced customer or job site. The report lists specified unit, time, duration, and can be sorted.
- **Engine Idling Report**  
A record of time and durations between ignition “on” and vehicle movement; and/or vehicle stop and ignition “off”.